

## **TRACTION PAW, KIT INSTALLATION INSTRUCTIONS**

### **MODELS: BELL 429**

Read all of the Instructions for Continuing Airworthiness thoroughly prior to performing any activities relating to this product

## **Table of Contents**

<b><u>Section</u></b>	<b><u>Description</u></b>	<b><u>Page</u></b>
1	Description	2
2	Installation & Removal Instructions	3
	Applicability	3
	Installation Instructions	3
	Removal Instructions	11

## **Notes**

1. If changes to this document are required, Alpine Aerotech LP shall revise all pages and reissue the entire document.
2. Alpine Aerotech LP shall make any subsequent revisions of this document available free of charge upon request. Alpine Aerotech LP also recommends that the end user of this product periodically verify the revision level of this document.

## **Section 1      **Description****

The following information provides a functional description of the Traction Paw, Kit as defined in Alpine Aerotech LP authority dataset AAL-490-020-001.

- In soft terrain landing situations (i.e. tundra, snow and sand) where the skid tubes can sink into the landing area, The Traction Paw, Kit provides increase floatation and damage tolerance.
- When installed, the Traction Paw, Kit provides additional flotation to the skid gear in the center of the aircraft's C of G, therefore increasing stability and flotation.

**Section 3    Installation & Removal Instructions**

**Applicability**

The Traction Paw, Kit (AAL-490-020-001) is applicable to all serial numbers, equipped with standard (low) landing gear only.

**Weight & Balance**


<u>Part Number</u>	<u>Description</u>	<u>Weight</u>	<u>Long. Arm</u>	<u>Lat. Arm</u>
AAL-490-020-001	Traction Paw, Kit	27.07*	213.30	.000
		12.27 (Kg)	5.41 (m)	.00 (m)

\* Total increase in weight to aircraft.

**General Notes**

1. All Installation Instructions shall be accomplished in accordance with (IAW) standard aircraft practices. Refer to the current revision of the FAA Advisory Circular AC 43.13-1 and AC 43.13-2 for details on standard aircraft practices.
2. Torque fasteners IAW the tension type torque limits indicated in the current revision of the FAA Advisory Circular AC 43.13-1, Table 7-1 unless otherwise specified.
3. All Dimensions are in imperial measures (inches/pounds).
4. Refer to Section 2: Maintenance Manual Supplement for instructions on maintenance for the item(s) referenced within this section.
5. Refer to Section 4: Illustrated Parts Breakdown for the part numbers of the item(s) referenced within this section.

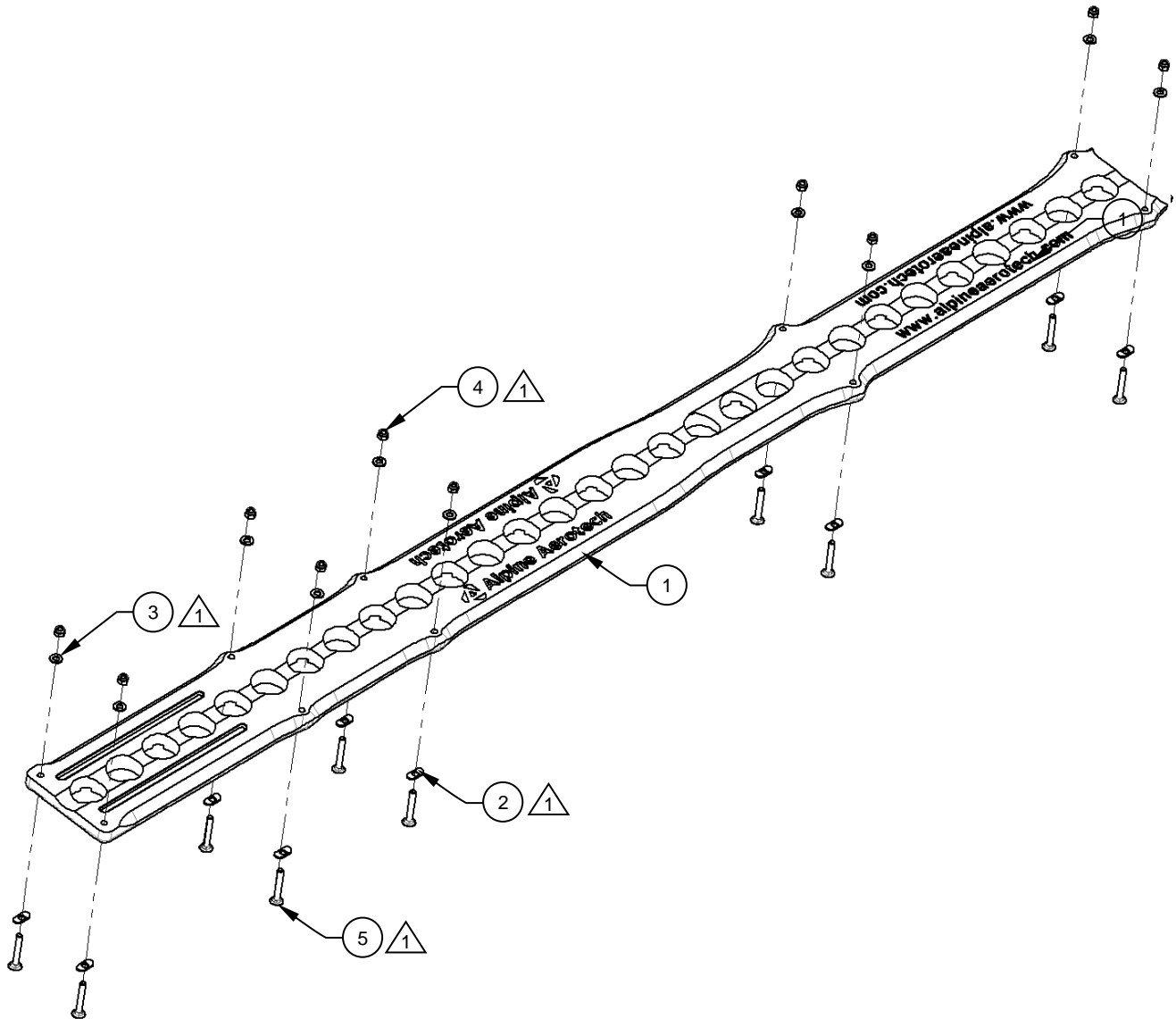
**Installation Notes**

 Typical item number for all like items in this view unless otherwise specified.

**Installation Instructions - Common**

**NOTE:** LHS installation shown, RHS opposite.

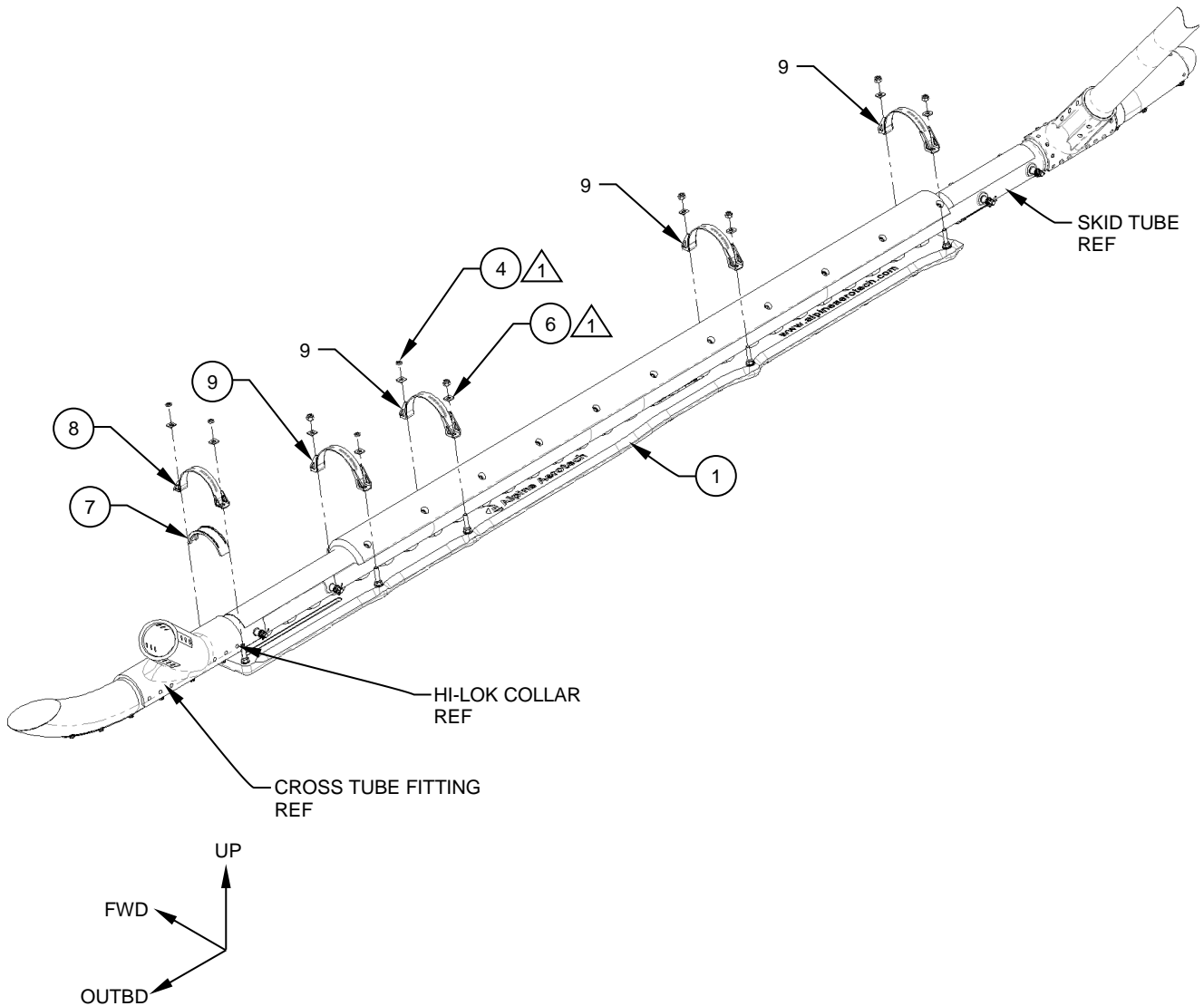
1. Install the supplied hardware on the Traction Paw, Detail (Item 1) as shown. Reference Figure 1.



**Figure 1**  
Typical Hardware  
Installation

**Installation Instructions – Climbing Iron Nylatron Installed**

1. Raise the aircraft so the Traction Paw, Detail (Item 1) can be slide under the skid tube.  
Reference Figure 2.



ISOMETRIC VIEW  
LHS INSTALLATION  
SHOWN

**Figure 2**  
RHS Shown  
LHS Opposite

**Installation Instructions - Climbing Iron Nylatron Installed** (cont.)

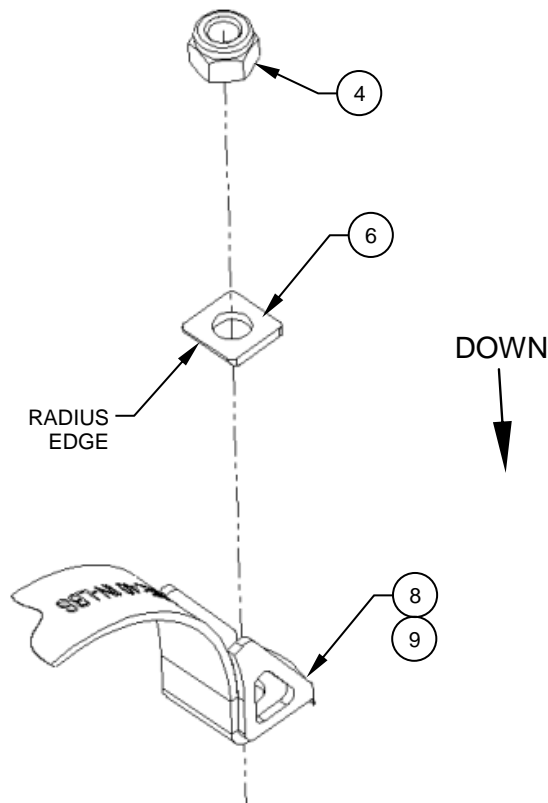
2. Once the Traction Paw, Detail (Item 1) is under the skid tube in its approximate location, place the Cap, Detail (Item 7) & Strap, Assy's (Items 8, 9) on their corresponding bolts. Reference Figure 2.

**NOTE:** Ensure the Cap, Detail (Item 7) & Strap, Assy (Item 8) is oriented over top of the Hi-Lok Collars common to the cross tube fitting.

3. Install the supplied Washer (Item 6) and Nut (Item 4) on each bolt. Reference Figures 2 & 3.

**NOTE:** Ensure the radius edge on the Washer (Item 6) is oriented down and towards the skid tube. Reference Figure 3.

**NOTE:** A “thin-wall” socket may be required to adequately engage the Nut (Item 4).



**Figure 3**

**CAUTION:** Do **NOT** apply full torque to the fasteners at this stage while the aircraft is raised off the ground. Only apply minimal torque to snug-up the Traction Paw, Detail (Item 1).

**Installation Instructions - Climbing Iron Nylatron Installed** (cont.)

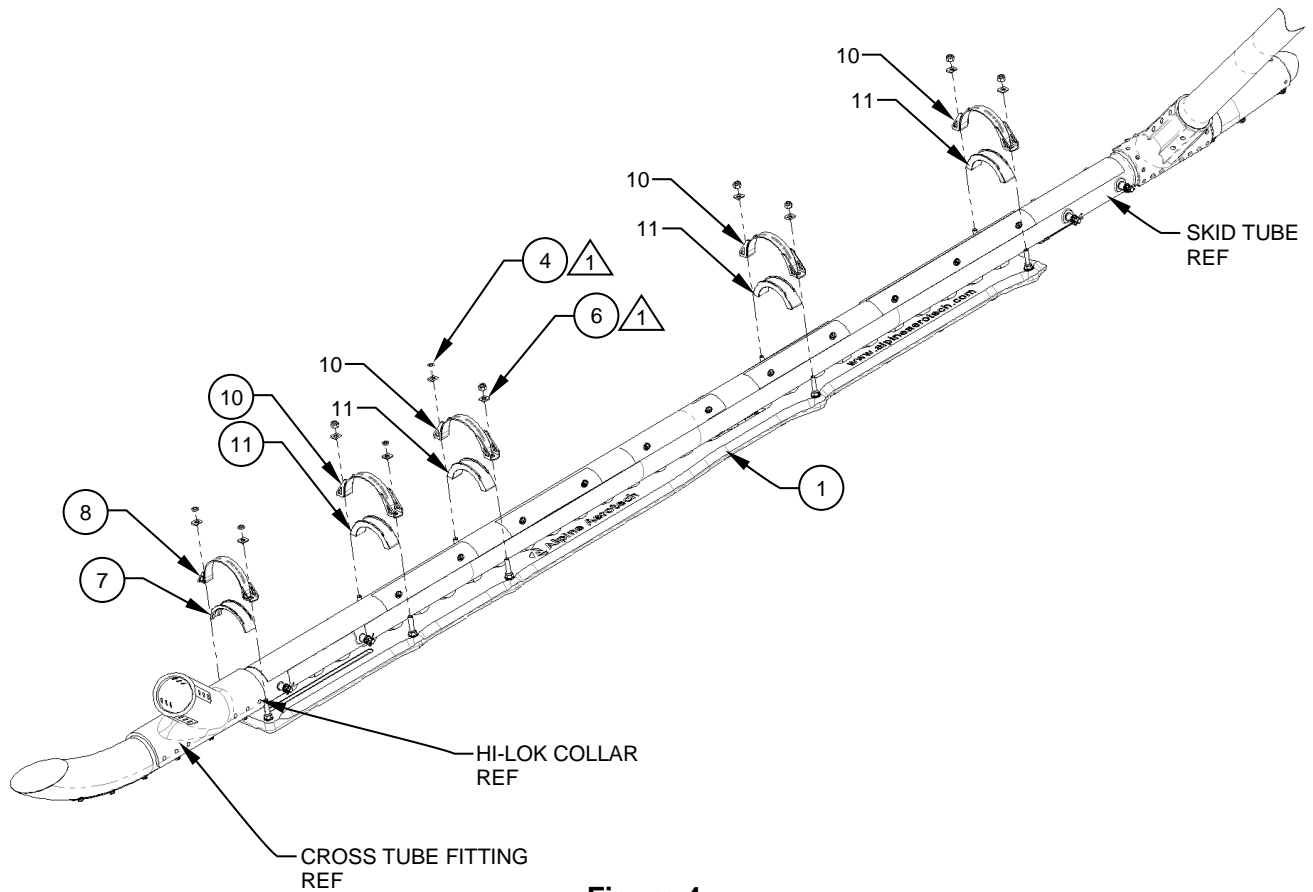
4. Lower the aircraft onto the Traction Paw, Details (Item 1) and torque the fasteners equally to 40 in/lbs. Reference Figure 3.

**CAUTION:** Before applying torque, ensure the Cap, Detail (Item 7) is oriented over top of the Hi-Lok Collars common to the cross tube fitting. Reference Step 2.

5. Installation complete.
6. Perform a General Inspection of all items to ensure proper installation.
7. Update the aircraft logbook for the installation of the Traction Paw, Kit.

**Installation Instructions – Climbing Iron Nylatron Installed (Not Installed)**

1. Raise the aircraft so the Traction Paw, Detail (Item 1) can be slide under the skid tube.  
Reference Figure 4.



**Figure 4**



**Installation Instructions – Climbing Iron Nylatron Installed (Not Installed)** (Cont.)

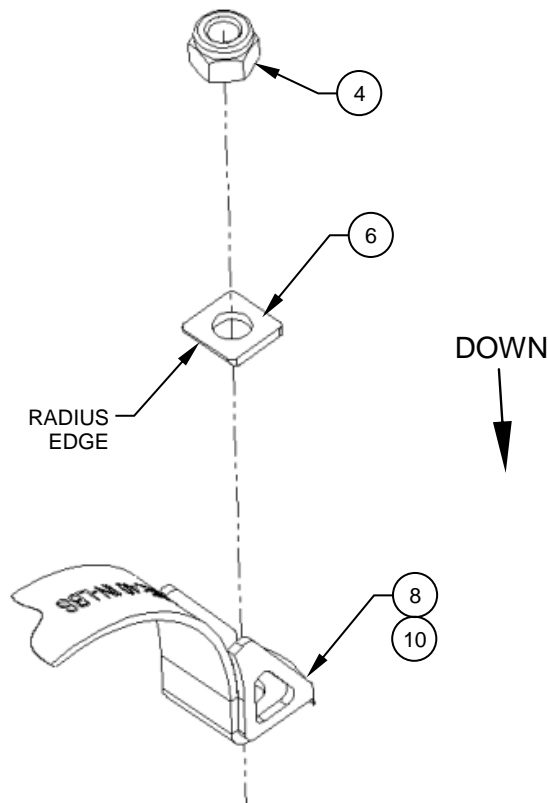
8. Once the Traction Paw, Detail (Item 1) is under the skid tube in its approximate location, place the Cap, Details (Items 7 & 11) & Strap, Assy's (Items 8, 10) on their corresponding bolts. Reference Figure 3.

**NOTE:** Ensure the Cap, Detail (Item 7) & Strap, Assy (Items 8) is oriented over top of the Hi-Lok Collars common to the cross tube fitting.

9. Install the supplied Washer (Item 6) and Nut (Item 4) on each bolt. Reference Figures 2 & 3.

**NOTE:** Ensure the radius edge on the Washer (Item 6) is oriented down and towards the skid tube. Reference Figure 3.

**NOTE:** A “thin-wall” socket may be required to adequately engage the Nut (Item 4).



**Figure 3**

**CAUTION:** Do **NOT** apply full torque to the fasteners at this stage while the aircraft is raised off the ground. Only apply minimal torque to snug-up the Traction Paw, Detail (Item 1).

**Installation Instructions – Climbing Iron Nylatron Installed (*Not Installed*)** (Cont.)

10. Lower the aircraft onto the Traction Paw, Details (Item 1) and torque the fasteners equally to 40 in/lbs. Reference Figure 3.

**CAUTION:** Before applying torque, ensure the Cap, Detail (Item 7) is oriented over top of the Hi-Lok Collars common to the cross tube fitting. Reference Step 2.

11. Installation complete.
12. Perform a General Inspection of all items to ensure proper installation.
13. Update the aircraft logbook for the installation of the Traction Paw, Kit.

### **Removal Instructions**

1. As there are no special considerations or additional steps to remove the Traction Paw, Kit for either inspections, or mission configuration, the removal of the Traction Paw, Kit can be considered the opposite of installation.
2. Perform a General Inspection of all items to ensure proper removal.
3. Update the aircraft logbook for the removal of the Traction Paw, Kit.